



## Position Description Tree Measurer

Sustainable Timber Tasmania manages Tasmania's public production forest for a vast array of environmental, social and economic values. Managing these forest values respectfully, innovatively and sustainably is at the heart of everything we do. As a Government Business Enterprise, we are committed to sustainably managing the forest estate, sustainably supplying timber and sustainably growing our business. Sustainable Timber Tasmania is proud to be recognised as a Tasmanian Employer of Choice. Our people are key to the success of the business and we invest in the development of a flexible, diverse, supportive and inspiring workplace.

### ORGANISATIONAL CONTEXT

<b>Division:</b>	Land Management	<b>Group:</b>	Resources and Planning	
<b>Position No.</b>	<b>Reports To</b>		<b>Direct Reports</b>	<b>Location</b>
<b>10263</b>	Forest Inventory Coordinator (P07108)		Nil	North East
<b>10295</b>	Forest Inventory Coordinator (P07108)		Nil	South
<b>Industrial Instrument</b>	Sustainable Timber Tasmania Enterprise Agreement 2018			
<b>Broadband Classification</b>	B			

### POSITION PURPOSE

Implement forest inventory programs and associated activities including coordinating and undertaking field inventories and research trial measurements and integrate the measurements into resource inventory information systems. Undertake tasks e.g. boundary marking, eagle nest searches and restoration planting as requested to achieve organisational targets.

### POSITION ACCOUNTABILITIES

- Undertake forest resource inventories and research measurements in native forests and plantations for internal and external clients
- Maintain the operation of forest inventory equipment
- Process measurement data and related information using forest inventory information systems
- Participate in special projects as required to achieve team goals
- Maintain high standards in inventory and research to maintain effective inventory practice
- Support Senior Tree Measurer in inventory field audits
- Undertake activities as requested by field staff e.g. boundary marking, eagle nest searches and restoration planting to assist the achievement of regional goals.

### KEY COMMUNICATIONS

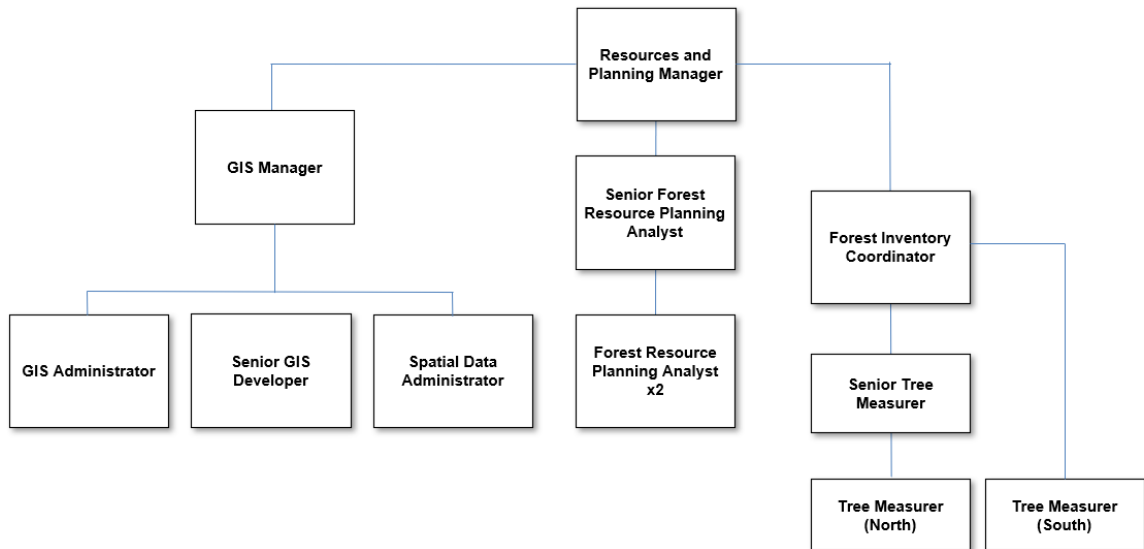
- Internally the position communicates daily with the Forest Inventory team members, the Resources and Planning Team and district employees to arrange effective use of time and resources to achieve team and district goals
- Externally the position liaises with inventory contractors to facilitate effective inventory practices.

### QUALIFICATIONS AND EXPERIENCE

- Forestry qualifications e.g. Certificate II in Forest Management or equivalent experience in forest resource inventory or related field
- Able to achieve Certificate II in Public Safety (Firefighting Operations)
- Experience using technical measurement equipment to take accurate measurements
- Numeracy skills and understanding of computer systems to report and analyse data
- Aptitude for field work, using GPS and reading maps.

<b>CAPABILITIES – TEAM MEMBER</b>		
<b>Leads Business</b>	Continuous Improvement	Consistently striving to improve processes, systems and products to drive efficiencies and build customer value.
	Managing Priorities and Workflow	Defining work priorities, action plans and resources to facilitate the efficient delivery of work.
	Decision Making	Applying a systematic process for evaluating and selecting the most appropriate course of action given available information.
<b>Engages Others</b>	Collaborating	Leveraging the skills, knowledge and expertise of others within and across teams to effectively deliver work outcomes.
	Influencing Others	Formulates a persuasive argument to build commitment to an agenda or influence others' commitment to a course of action or plan.
	Building Customer Commitment	Takes responsibility for customer satisfaction and building sustainable customer relationships by delivering quality outcomes and resolving issues that arise.
<b>Leads Self</b>	Courage	Proactively confronts difficult situations, takes definitive actions to protect the interest of others, their team and the organisation.
	Adapt and Respond to Change	Adapts to changing requirements, accepts new ways of working with positivity and aligns behaviours to support change.
	Action Orientation	Takes independent, prompt action to overcome barriers, respond to changing circumstances and deliver positive outcomes.
	Quality Orientation	Produces work output with a high degree of accuracy, identifying and correcting errors or mistakes before delivering final work product.
<b>Values</b>	1. Respect – We create safe spaces	
	2. Responsibility – We take ownership	
	3. Growth – We create sustainable value	
	4. Excellence – We make it happen	
<b>CHALLENGES</b>		
<p>The main challenges facing the position include:</p> <ul style="list-style-type: none"> <li>▪ Working in isolated areas and participating in programs that require consecutive days away from home</li> <li>▪ Being flexible to adapt to changes in the work schedule due to inclement weather or changing priorities from district employees</li> <li>▪ Supporting a changing team of internal and contract tree measurers</li> </ul>		
<b>OTHER REQUIREMENTS</b>		
<ul style="list-style-type: none"> <li>▪ Be physically fit and able to undertake field work in remote forest locations</li> <li>▪ Participate in fire activities as required and where required pass the annual fire fighter health risk evaluation comprising both the medical assessment and the fitness test</li> <li>▪ Hold a current manual driver's licence</li> <li>▪ Complete the annual Performance Development process</li> <li>▪ Achieve and maintain the required skills, certificates, and accreditations to perform the requirements of the role</li> <li>▪ Comply and adhere to the organisation's policies and procedures, including the Code of Conduct</li> <li>▪ Be available for rostered fire duties on weekends, public holidays, and outside normal work hours</li> <li>▪ Adhere to duty of care responsibilities to yourself and others under health and safety legislation.</li> </ul>		

## Resources and Planning



I have read and understand the requirements of the position as stated above.

---

Name and signature

---

Date